

MOTORCYCLE



R06
50CC

motor scooter

Instruction

-Preface-

Thanks for purchasing 50CC Scooter. we produce this model by applying advanced technology in the world. This model is designed for downtown area and you will surely enjoy happy, interesting and safe driving with it.

Motor scooter racing is a kind of exciting sports. In order to keep your favorite motor in its best condition, you shall read this manual carefully before driving.

This manual includes the proper operation methods and maintenance; do as the following requirements, then your scooter will surely serve for a longer time without malfunction. Our authorized technical staff and maintenance department will offer you good service.

CONTENTS

Notice about safe drive.....	1
Components.....	3
Right operation & driving method.....	11
proper Driving.....	13
Method Stop.....	15
Inspection before driving.....	16
Easy DIY maintenance.....	20
Maintenance & Inspection Schedule.....	24
Malfunction.....	24
Radiator maintain.....	25
Electric theory diagram.....	26
Specification & technical parameter.....	27

1.IMPORTANT NOTICE ABOUT SAFETY

with easy mood and proper wearing.
Comply with the traffic laws and regulations .

Not wear too large/long clothes to avoid any accident.
When parking, surely far away from dry lawn or tinderbox.
The muffler is very hot even 30 minutes after stop driving,
take care not touch muffler.

Wearing

wear helmet well, clothes in order to avoid hook on the brake rod.
both hands griping on handlebars, single hand driving is dangerous.
More safety when wear even shoes.

Drive method

Keep in right posture to make free operation.

Load's gravity-center is a very important factor which can influent 2-wheeler's safety. So please seat down at the middle of saddle. If load is far away from right gravity-center, the handlebar will wobble and give rise to danger .

When turning at a corner, incline your body toward the circle-center slightly is helpful. If not do it, motor will became instable.

Bad road condition will cause instable driving. When driving on ill-condition road, to learn the road condition first, and slow down, easy your wrist and shoulder, grip handlebar tightly.

Load

Overload will affect driving stability and operation and the handlebar will be different and easy to swing. So no overload.

Max load rear carrier bracket is 3kg, goods case max load 3kg.

Attention:

Not leave any cloth under seat(except goods case)because it may cause ill fuel supply or burn engine.

Not leave any cloth between outside cover and engine, for it may cause engine burning.

Not accommodating goods except in goods case in order to avoid damage on outside cover.

Supply fuel

No flame when supply it. Stop engine when filling fuel.

Not alter motorcycle's structure, for it will influent its service life and driving safety.

Casual alteration on motorcycle is not permitted and also is illegal.

So do not make any alteration.

No right for guarantee if there any casual alteration on motorcycle.

2. Components



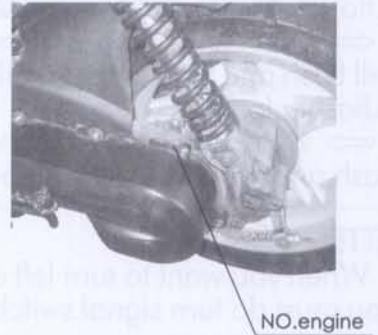


Function & operation components

Position VIN NO.

NO. of frame and engine is used for register. Frame number is branded on main frame, engine

No. on side cover of engine; referring to diagram:



● instrument

Speedometer: driving speed is expressed by Km/h or m/h

Total distance meter: expressed by Kms or miles.

Tachometer: engine's turning speed is expressed by r/min.

Fuel meter

to show the volume in fuel tank(reset pointer when OFF the main switch). When pointer go to red area, it shows that the remaining fuel is little and you need to supply fuel.

L.flasher lamp.

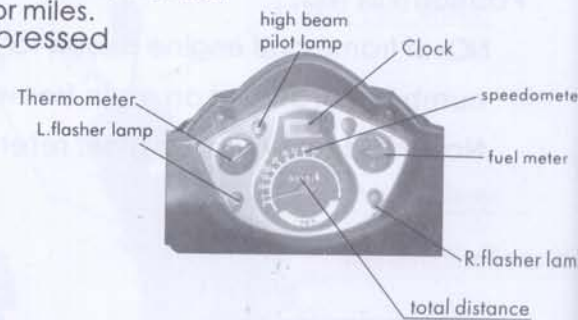
⇐ when turn signal switch is turning left.it will flash and flasher relay will work.

R.flasher lamp

⇒ when turn signal switch is turning right.it will flash and flasher relay will work.

ATTENTION:

When you want to turn left or right lane on riding. you must do turn signal switch on left or right.



■ Main switch

Off : power shut off, engine stop working.

During stop time, key can draw out.

ON : power connected, can start engine.

While driving, key cannot draw out.

LOCK : steering lever locked on, can't start engine. can draw key out.

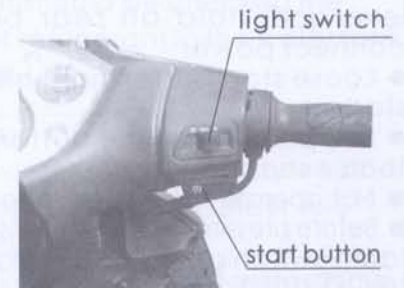
ATTENTION:

- When engine stop, if main switch stay in ON for a long time, the capacity of battery will decrease and hence influent engine start.

- When parking, sure lock on steer lever to avoid theft and not forget to take key out.

■ Start button

Used it to get electric start.



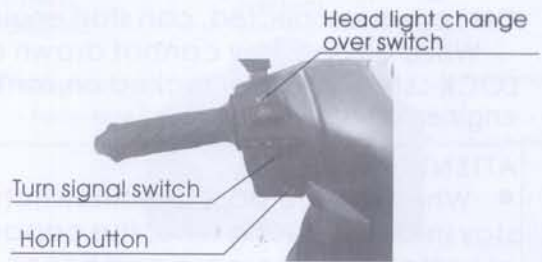
ATTENTION:

- When start, do hold on front brake lever and hold on rear brake to connect power.
- Loose start button right after engine started.
- Not press down the button for more than 4 seconds.
- Not operate it during engine is working.
- Before pressing start button, fist turn head lamp switch and direction lamp switch to OFF position.

Light switch.

- In this position ,head lamp,instrument lamps and tail lamp all go out.
- ☀ In this position,head lamp,instrument lamps and tail lamp all light on.

Head light change over switch



When driving in downtown, please use low light.
When use high light, its pilot will flash.

■ Horn button

When main switch is ON, press down this button, it will sound out.

■ Turn signal button

Use it when turn or change lane.

⇐ Use when turn left

⇒ Use when turn right

The according pilot lamp will flash when direction lamp is working.

ATTENTION:

- Direction pilot will not stop work itself, so do not forget to reset it after use it.
- When main switch in OFF position, direction lamp will not work.

■ Thermometer (The item is only for water cooling motorcycle)

The temperature of thermometer shows refrigerant's.

It is better the finger of thermometer is showing the place under "Hot"(H), otherwise, It should be checked the measure of refrigerant in the water tank immediately.

■ Attention:

- In the environment of torridity weather, if the engine is operating under idle speed in a long time.
- It will make the engine of motorcycle over hot, Then it should be turn off the engine, let it keep cooling.



■ Steering lever lock

To avoid theft, do lock on steering lever when parking.

Turn steering lever left-ward to end, turn key to main switch to "LOCK", then the steering lever is locked on. When unlock it, turn key to "OFF" or "ON", it will unlock itself.

ATTENTION:

- After lock on it, steer it slightly to make sure it has been locked on.
- Not turn key to "LOCK" during driving, for that will cause steering lever out of control and bring some accident.
- When parking, do not park where will make traffic jammed.

■ Lock seat

When want to place helmet, you must unlock seat.

Unlock method:

- 1.insert key to seat switch, then turn right.

2.uncover seat.

How to close seat:

- 1.place down seat, then press it downward, it will lock itself on.
- 2.then pull seat by it tail slightly to ensure whether it has been locked on.

ATTENTION:

- Do not leave key under seat and lock it on.



seat switch



tank cap

■ Supply fuel

- 1.Turn cap left-ward to open it.
- 2.not let fuel level beyond the criterion board.
- 3.turn cap left-ward to close it.
- 4.please fill supper 90# (or above) petrol

5. not add any other things in fuel to avoid engine malfunction.

ATTENTION:

- When supply fuel, stand motorcycle up and shut engine off, far away from flame.
- Not let fuel level beyond criterion board, for fuel will overflow from fuel tank.
- Do cover tank cap properly.

3. Right operation

■ How to start engine

1) stand the standing support up.

2) Before start it, see if fuel is enough.

ATTENTION:

- To void motorcycle rush out after engine start, do stand it up.
- If not stand it up when start, you should operate rear brake to keep rear wheel locked on.
- If rear brake span improper, rear brake will unworkable and cause some danger.

3) turn main switch to "ON";



ATTENTION:

- when start engine, please turn head lamp and direction switch to "OFF" to avoid additional power consumption.

4) Lock on rear wheel

To operate on rear brake to connect power.

ATTENTION:

- If rear brake span improper, rear wheel cannot brake and thus may cause some accident.

5) turn throttle valve slightly and press down start button.

ATTENTION:

- Move your finger right after starting engine.
- Not lock on electric start button after start engine, because that will bring ill influence to engine.
- Cannot start engine if not operate on rear brake.
- If engine cannot start after pressing down button for 3-4 seconds, you'd better turn throttle valve 1/8-1/4 circle then start it again.
- If stay engine unused for a long time or there's no fuel in tank, even supply fuel to it, engine still cannot start, do not turn throttle valve, and press the start button several times as normal do, that will start engine.
- When it's cold, kick the starting lever for 2-3 minutes to start it up.

ATTENTION:

- Before driving, keep rear wheel brake on.
- The emission contains CO, which will do harm to body, please do not start engine where is ill-ventilate or very crowded.

Start with start lever

No need to operate on throttle valve, step down start lever.

ATTENTION:

- Reset start lever after starting engine, otherwise it will influent safety.



start lever

4. driving method

1) operate center stand
operate rear brake, then push motorcycle forward, the center stand will release automatically.

ATTENTION:

After start engine and before driving, do not accelerate casually.

2) Ride on motorcycle from left side, seat properly, left foot stay on ground to avoid motorcycle inclining.

ATTENTION:

Before driving hold, rear brake lever

3) Lose rear brake

Lose rear brake lever

ATTENTION:

After doing it, do not turn throttle valve casually to avoid motorcycle rushing out accidentally.

4) Accelerate when start off
Slowly release rear brake lever, turn throttle valve gradually to accelerate.

Not accelerate or slow down sharply during driving, this is to save fuel and elongate it's service life.

5. PROPER DRIVING

before start off, first switch on direction lamp, then ensure safety and driving.

1) limit to speed

speed can be adjusted by throttle valve. Accelerate---speed will become faster. Not make it sharply, just turn throttle valve lever slowly.

Slow down--- speed will slow down, operate throttle valve lever very

sensitive.

2)wear-in New engine

Keep speed below 50km/h for new motorcycle during its very first 1000km driving.

Not accelerate very sharply.

Do not drive at a same speed for a long time.

3)operate both front& rear brake the same time

reset throttle valve lever to OFF position, pull tightly the brake lever.

When operate brake, the brake lever will turn from "slow" gradually to ideal brake method.

When on a distant decline or sharp decline, should use brake constantly and engine brake.

ATTENTION:

Only use front or rear brake will easily slide motorcycle.

When raining and on wet road, sharp brake will slide the tire, which

is the main reason to cause motorcycle fall down. So should slow down and brake in advance.

Constant long time use of brake is the main reason why brake is overheated and thus may waken the brake function.

4)Not make sharp brake and sharp turn

- Sharp brake and sharp turn is the main reason to cause slide.

- When raining and the road is very smooth, sharp brake will slide and fall motorcycle, it very dangerous that should pay high attention.

5)Pay special attention when driving in rain

- When raining, the safe brake distance is longer than that of in normal day. Slow down your speed in advance, then operate on brake slightly.

- When on decline, first reset throttle valve to close position, and brake constantly, drive very slowly.

5. how to park

1) when near parking position

- light on direction lamp in advance and care for vehicles come from rear or side, stop slowly.

- Reset throttle valve, operate front & rear brake, then the rear brake lamp will light on to warn the coming vehicles.

2) When motorcycle safely stopping

- Reset direction lamp switch, turn main switch to OFF position.



Main switch

ATTENTION:

During driving, if main switch is shut off, the electrical system cannot work. So must operate it only when stop and parking.

3) When parking

Stand motorcycle with its center stand on flat ground.

- Stand up center stand where is safe. Motorcycle is easy to fall down where is not even.

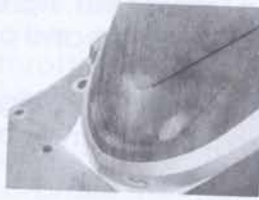
- Turn motorcycle straight ahead with left hand hold on handlebar, right hand hold on side rod under seat; right foot step on main stand, right hand pull backward.

4) to avoid theft, lock on steering handlebar when parking and not forget to draw key out.

6. INSPECTION BEFORE DRIVING

form the habit of take inspection before driving.

To avoid any malfunction and accident, inspection before driving is a must-do. If there's anything abnormal, please maintain it in service station.



oil tank

This scooter is equipped with oil alarm device. It works when the oil is insufficient. Please fill in 2 stoke oil timely upon the alarm.

2) Check & supply fuel

- Supply fuel when fuel gauge pointer go into red area(which suggests the remaining fuel is insufficient.
- Supply in time leadless fuel with octane value 90# or above it.

How to supply fuel

- 1.insert key to main switch, turn it right to unlock tank cover;
- 2.to close it, press down tank cover can work.

Attention:

- Stop engine when supply fuel.
- To close tank, make sure the cover is pressed down and self-locked.
- not add any other things into fuel when supply it into tank, that'll cause some malfunction of engine.
- Not exceed standard board when supply fuel,

3) check & supply front brake oil

check its volume

- 1.make handlebar straight ahead and

check if oil is between max and min mark.
2.when it decreases to min mark, inspect the wearing of brake shoe.
3.if the wearing not beyond limit, it usually means oil overflowing, you should have it inspected and maintained in service station.

● Supply brake oil

- 1.make handlebar straight ahead, take down 2 screws on its tank cap, then take away the cover.
- 2.recommended brake oil: DOT-3, inlet it into tank till it up to maxlevel, tight up the two screws on cover.
- 3.renew brake oil once a time every 1000km driving or once a year.

ATTENTION:

Not use improper brake oil, for that may cause brake malfunction.

When supply brake oil, cover painting parts with cloth to avoid damage to them. The brake oil will do harm to painting parts and plastic rubber parts.

4) check & adjust rear brake
its normal free stroke should be 2-3
centimeter.

ATTENTION:

Adjust nut after adjusting brake, gear
protruding part to bolt to avoid any
danger come up from its change during
driving.

Adjust rear brake

Is its function excellent?

Drive slowly to see if both brake can
function very well.

5) Inspect brake lamp

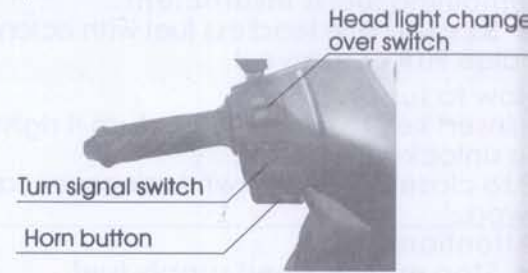
Is brake function good?

1. turn main switch to position "ON"

2. hold on front brake rod to see if
brake lamp is lighted on.

3. Hold on rear brake to see if its
brake lamp is lighted on.

4. check if there's any dirt or hurt on
lamp cover



6) inspect direction

turn main switch to position "ON".

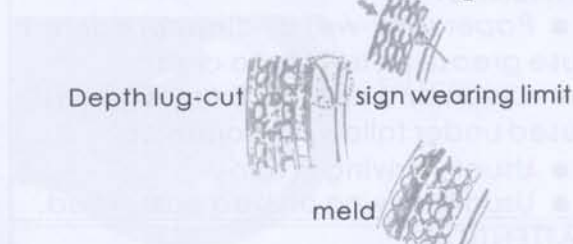
Switch on direction lamp to see if the
right, left, front, rear direction lamp
and pilot lamp is flashing.

7) Inspect tire

Proper tire pressure
(when tire is cool):kg/cm

	1person	2persons
Front tire	1.75	1.75
Rear tire	2.00	2.25

Worn-out tire will decrease driving stability and even make motor out of control. Change tire when depth of lugs become shallow. wearing limit



8) inspect shock absorber

load onto handlebar and seat, press it and see if front & rear shock absorber works well.

9) whether head lamp tail lamp and position lamp can lighted on?
Whether there's any dirt or hurt on it
10) whether odometer pointer can move?

Get front wheel away from ground and rotate it, the pointer will move.

11) whether horn can work?

Turn main switch to position "ON" and press horn button.

12) whether rear-view mirror is at right angle

seat on saddle to make sure the angle is right and see if there's any dirt or hurt on it.

13) if the rear number board is clean if it hurt or loose

14) if muffler is in normal condition? If it's loose or noisy

15) Is there any abnormal signs

16) inspect steering lever

- hurt: see if there's hurt on it. Operate on front brake, move brake-bar to see if it's normal.

- Steering lever: swing it to all direction and see if it's loose.

17) lubricate condition of all motorcycle parts

see if lubricant on all parts is sufficient. Take this inspection regularly to guarantee safe comfortable driving.

If motorcycle stay unused for a long time, you should inspect this item regularly.

- The very first inspection: within one month or 300km after purchasing motorcycle, please take inspection and maintain it.

7. EASY MAINTENANCE

clean & change air cleaner

1. take down its 5 screws on air cleaner cover to take away it.

2. take out element.

3. when fit them on, do according to reverse procedure

4. the air cleaner used in this model is paper semi-wet one, need to inspect and clean it every 1,000km driving.

5. please change it every 2000km regularly

6. clean air cleaner element with high pressure gas.

ATTENTION:

- Paper semi-wet air cleaner cannot use grease petrol etc to clean.

- Clean and change it more often if used under following condition:

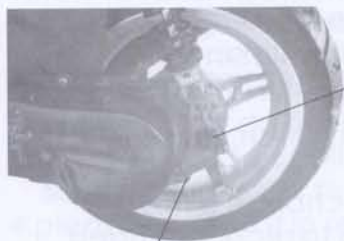
- Usually driving in rain.

- Usually driving on bad dusty road.

ATTENTION:

- Ill fit of air cleaner element will lead dust to cylinder straightly and hence waken horsepower, shorten engine's service life.

2)renew gear oil
<renew it once a time >
every half year or 5000km
specification: SAE 90#
gear oil capacity
total capacity: 100cc
when renew: 98cc



Fill screw

Drain screw

<how to renew >

1. stand motorcycle up on plat ground by center stand.
2. take down drain up bolt and inlet bolt.
3. remaining oil is easier to flow out when engine is warm.
4. clean drain bolt and tight it up.
5. inlet gear oil slowly.
6. tight up inlet bolt to avoid oil overflow.
7. renew it after the very first 300km driving, since then renew it once every half year or 5000km driving.

ATTENTION:

- Renew it more often when drive under following condition:
 - Usually driving in rain.
 - Driving for long time(long distance)
 - Drive with heavy load.

3) Clean & change spark plug

1. take down spark plug cover.
2. take down spark plug with sleeve.

<How to clean >

Better use special cleaner. If not available, also can use needle brush instead.

<Adjust >

Normal span between side electrode is 0.6-0.7

<Recommended spark plug: not use other spark plug except recommended one CHAMPION L87YC >

ATTENTION:

Be careful that engine is high hot even after stop working.
Tight spark plug up with finger, then use special sleeve instead.

4) Maintain battery

- Sealed battery free from water supply is applied, not need to inspect electrolyte.

ATTENTION:

- Not open sealed electrolyte cover.
- Leave battery unused for long time will waken its power, take down battery from motorcycle, electrify it and store in cool well ventilate place.
- If motorcycle long time unused, please take cathode apart.

5) Change fuse

Switch off main switch, and see if fuse is melted.

- If so, please change a new fuse according to recommended specification(15A)

ATTENTION:

- Surely tight fuse up when fit it, loose fuse will burnt and melt and hence cause malfunction.
- Use improper fuse is the main reason that cause fuse burnt and melted.
- When change electrical appliances(lamps and instruments etc), should use original parts. If not, fuse is easy to melted.
- Protect fuse not to be wet when clean motorcycle

6)Change Fuel filter

1.how to take it down

take away goods case

take apart middle cover

take down fuel filter and change it with a new one.

2.when fit it on, do according to the reverse procedure.

3.this motorcycle applies paper filter, please change it once after every 500km or half year regularly.

4.please change it in service office.

ATTENTION:

- Do not forget to stop engine before change it and no flame.

8 Maintenance sheet

I: inspect, clean, adjust, lubricate or change A: adjust
C: clean R: change T: tighten

Item		Distance(km)													
		300	1000	2000	3000	4000	5000	6000	7000	8000	9000	10000	11000	12000	13000
engine	Drive strap							I							
	Air cleaner	Clean every 100km, change when needed													
Fuel system	Gear oil						R					R			
	Filter fuel						R								
Fuel system	Choke				I		I								
	Joint fuel hose		I		I		I								
Ignition System	Carburetor		A	A		A				A			A		
	Spark plug			I		I		I		I		I	I		
other	Electrolyte														I
	Grave bolt	T					T								
other	Span clutch lever	A					A								
	Brake		I	I	I	I	I	I	I						I

Please maintain according to different requirements for different engine;
If drive distance exceed listed above, maintain in comply with the sheet;
Maintain more often if usually drive in dusty area.

9. MALFUNCTION

when come with malfunction during driving, please inspect in service office.

Engine cannot start

If stop working while driving, check following items first:

- If there's still any fuel
- If fuel meter pointer stay in red area, if so, supply fuel;
- Whether start method is right.
- Whether there's problem on other parts.

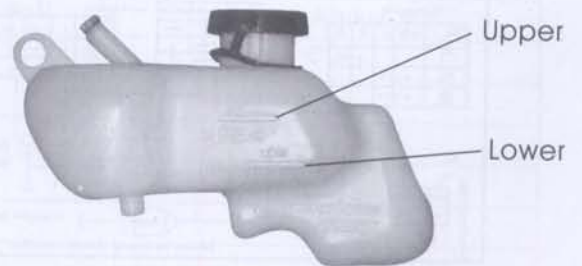
Radiator maintain (The item is only for water cooling motorcycle)

Style of refrigerant advise to use

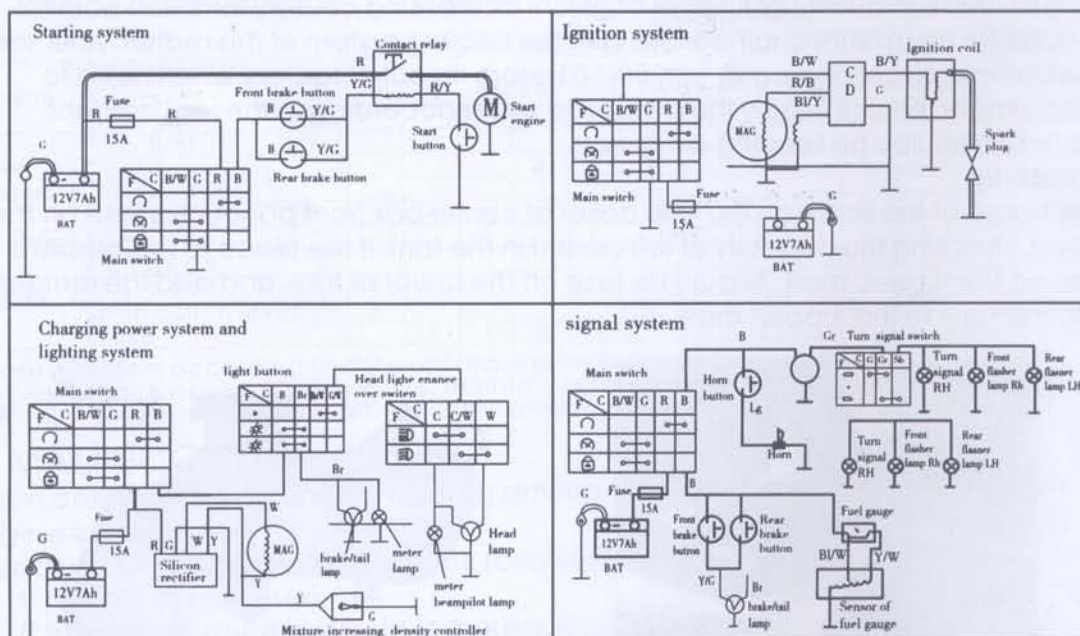
Only to use high quality antifreeze of glycol comprising cautionary inhibitor, which is special for aluminium engine working. In the cooling system of this motorcycle, there are contain glycol and water with 50/50 before it's out of factory. When need to supplement, please supply the antifreeze water according to the requirement. Radiator should be keeping cleanness.

Check-up

Discharge of the screw on the little cover of carrier box front panel, and take off the cover, checking the capacity of refrigerant in the tank. If the place of refrigerant is closing the "Lower" mark, Should be take off the cover of tank, and add the refrigerant into the tank to the "Upper" mark.



Electric theory diagram



R-red B-black Bl-blue O-orange G-green Y-yellow W-white P-pink Br-brown Y/G-yellow/green R/Y-red/yellow B/W-black/white G/R-green/red Y/B-yellow/black blue/yellow R/B-red/black R/W-red/white G/W-green/white Br/bl-brown/blue Bl/W-blue/white SB-sky blue B/Br-black/brown Lg-light green Gr-grey

11.SPECIFICATION & TECHNICAL PARAMETER

Model	50CC	Total length	1835mm
Engine mode	2 stroke forced air-cooled	Total width	670mm
Cylinder Volume	49ml	Total height	1160mm
Compress ratio	7.6:1	Min spacing from ground	120mm
Dia X stroke	40X39.2mm	Wheelbase	1280mm
Max power	3.5kw/7500rpm	Tire specification	120/70-12
Max torque	4.2N.m/6000rpm	Start mode	Electric/kick
Max speed	≥50km/h	Capacity battery	12V7AH
Transmission mode	Auto transmission	Fuel	Above 90#
Max gradeability	Above 18°	Ignite mode	CDI
Economic fuel consumption	Less than 2.8L/100km		
Capacity fuel tank	8.7L		
Cap	1.0		
Weight empty	79±5kg		