

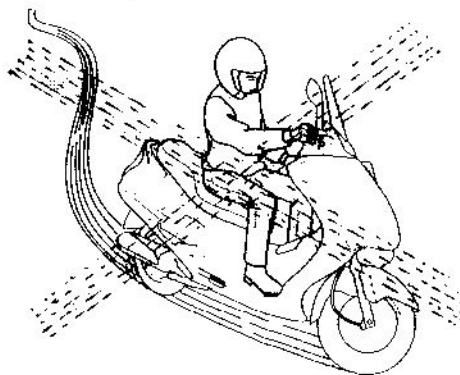
WAY OF DRIVING

- Keep your only natural posture to actively driving the motorcycle.



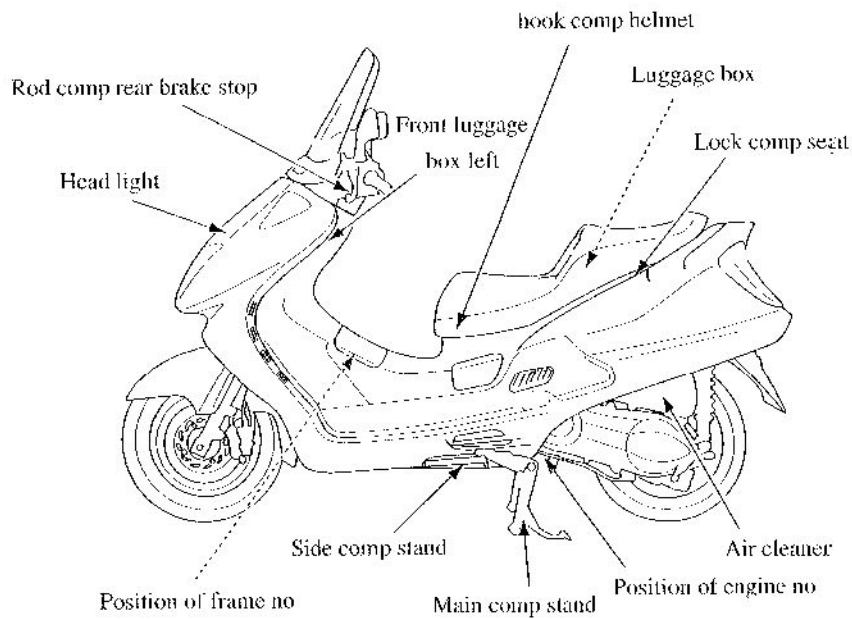
- The position effect on the rider's safe, please seat at the center of double seat, if driver seat at the end of double seat and make front wheel reduce weight and the handle bar will swing, in a word, this happen to damage.

- When driving at the swerve, please keep the body to inner side, if else happen to damage.



- Please pay attention to driving on the no-smooth road.

2.LOCATIONS OF PARTS:



3. INSTRUCTIONS FOR THE MOTORCYCLE

■ Speedometer and indicator

(1) Mileage recorder

It displays the total distance covered by the vehicle (Km).

(2) Speed indicator

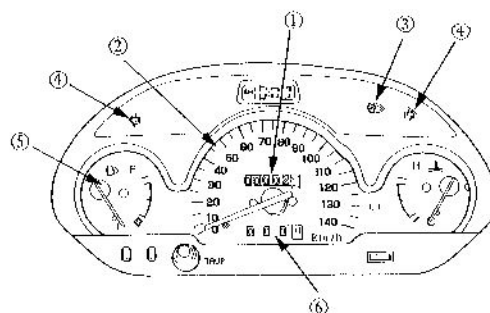
The standard of speed : Km/h

(3) Pilot of headlight

Pilot of headlight is switched and indicate the pilot light.

(4) Turn signal indicator

The signal is switched and the indicator is light.



(5) Fuel meter

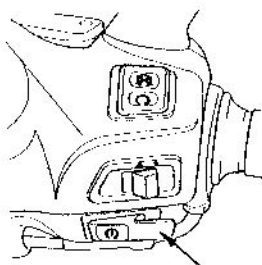
The fuel indicator shows the fuel capacity remaining in the fuel tank (when the main switch is ON, the meter indicates correctly, when the position of OFF, the meter is not correct.) When the needle is at the red zone, it indicated the fuel is 1.5L, and please supply the fuel 90# in time.

(6) Shortage distance meter

It is use for shortage distance and can indicate "0".

■ Starting button:

When use the electric starting, please draw the rod comp front brake stop, or step the pedal comp rear brake, until the electrical source is touched on .



■ Switch comp headlight

■ Headlight OFF:

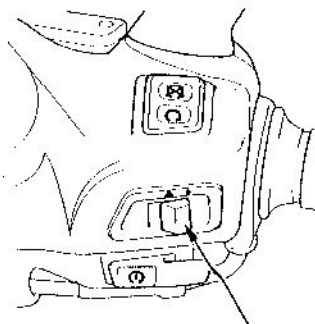
OFF



● Headlight, sidelights, speedometer light are shut off.

● Sidelights, speedometer light are switched on.(the engine don't start and the lights are shut off)

● Headlight, speedometer light are switched on (the engine don't start and the lights are shut off)



■ Switch comp turn signal:

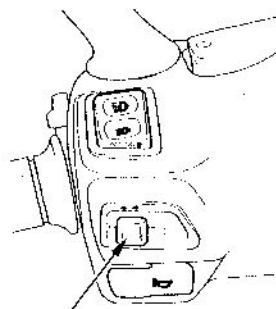
When swerve or change roadway, please turn signal. When changing switch, the turn signal can spark or shut off.

NOTE:

● Please return the turn signal after using because it can't relax, if else effect on other people's safe.

[L] : Using it at the turning left.

[R] : Using it at the turning right.



■ Key comp turning bar

Please lock the turning bar when parking in order to avoid theft.

<Way of lock>

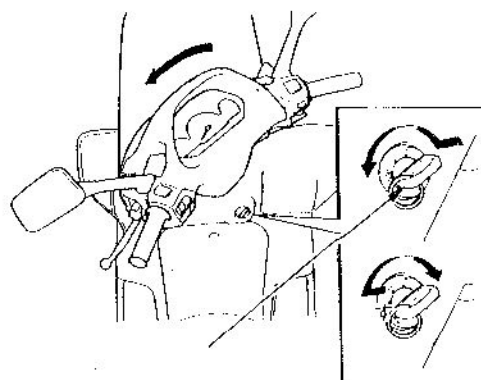
Make the turning bar turn left full, and turn the main key to LOCK.

<Way of unchaining>

Turn the key to "OFF" and the key will auto unchain.

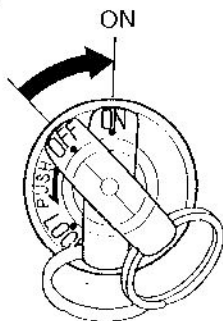
NOTE:

- Turn the turning bar lightly after locked it, and check it is locked.
- Don't turn the main to "LOCK", if else out of control of the turning bar and happen to damage,
- Don't parking the place where traffic is frequently.



■ Way of starting for engine:

- (1) Check the gasoline, fuel and battery before starting.
- (2) Stand the main stand when starting engine, and make the rear wheel nearly room.
- (3) Turn the key of bank to "ON".



- (4) Adopt the electric/kick starting. If adopt electric starting, must catch hold of front brake bar or step rear brake pedal.

- (5) When driving in winter, turn the key of bank to "OFF", kick starting about 5 times and make into gasoline, then touché with the electric road, with accelerating and warm up the engine about 2-3 minutes. All are OK.

NOTE:

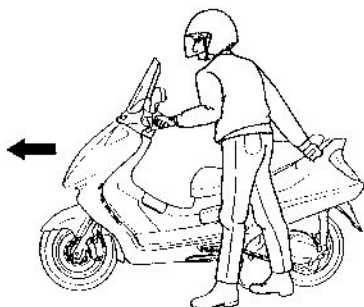
- Please using it according to above (5), when the gasoline don't reach the standard of 90# or using it long time, and starting it again.
- When using the new motorcycle first, kick starting it and can longed the usage life.

- (6) Because the motorcycle designed advanced electric starting valve, can start it with kick/electric starting.

4.WAY OF NATURAL DRIVING

I Spring the main stand firstly

- Push ahead and the main stand will auto spring.



NOTE:

- Don't freely add oil and make the engine high speed before the engine don't driving.

- Ride the motorcycle from left side and seat well, the left foot touch with room and avoid to rave.

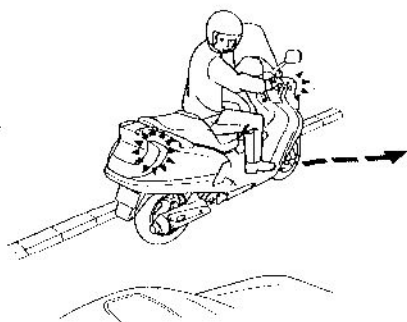


NOTE:

- Keep the front and rear brake the position of braking before driving.

[4] Correctly driving

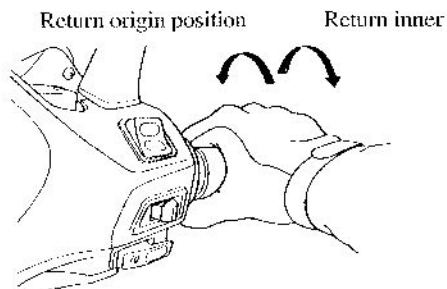
Before driving the motorcycle, please open turn signal and confirm the rear safe.



Adjusting of speed is controlled by the grip of throttle.

Return inner The speed will become faster, so please accelerate slowly.
The grip shall return to accelerate and the power become high when beginning to start or climbing.

Return origin position The speed become slowly.



■ Don't stop and swerve peremptorily

- Swerving and stopping peremptorily is one of cause of accidents and very danger.



■ Notice driving the wet day.

- Please decelerate to drive because of longed the distance and the difference of road between the sung and wet days.
- Return the throttle grip to "OFF" and proper discontinuity braking when downgrade.

3 When parking

Stand the left side of motorcycle in the smooth land and support main stand of motorcycle.

- Support the main stand in the little traffic and smooth land, if else happen to accident easily.

- The left hand catches hold of handle bar and the right handle draws side rod under seat. The right feet step main stand and the right hand draw it rear.

4 Lock the handle bar and take out the key in order to avoid theft when parking.

(please reference the page 12)



5. Inspection before driving

■ Inspection before driving

Please have a habit of checking vehicle before driving.

Must check the vehicle before driving in order to avoid happening accident.

If you find the trouble of vehicle, please contact with the seller or service place.

■ CHECK AND SUPPLY OIL

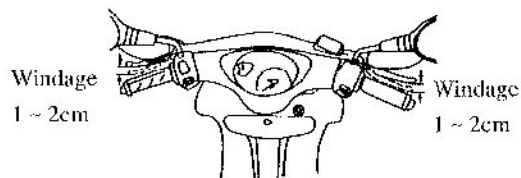
1. Support the frame body and take out the ruler of oil to clean.
2. Straight insert the ruler of oil.
3. Take out the ruler of oil and check the rest oil. If the level of oil reach at the under limit, please supply the oil until the upper limit.

2 CHECK BRAKING

《WINDAGE OF BRAKING ROD》

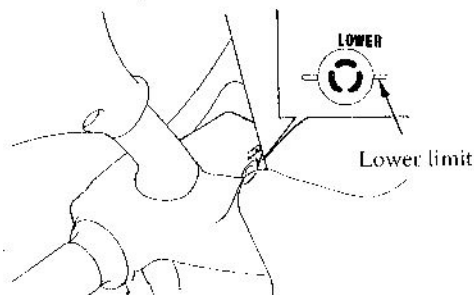
The braking rod must have proper windage. And it's active is work naturally.

Range of measuring windage : 1-2 cm



〈CHECKING BRAKING OIL〉

1. Place the handle bar correctly, check the braking oil in right fuel tank, and keep it the position between the upper and under limit.
2. Check the meshing of rubber when the braking reaches the under limit.
3. Please maintain it to the service place when the rubber worn but not exceed the stated ruler.
4. Recommend the braking oil: DOT3



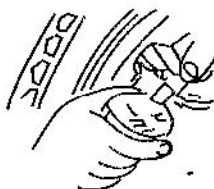
6 Inspection of wheel

- Check the pressure of tire

Natural pressure

Front wheel tire.....196Kpa

Rear wheel tire.....221 Kpa

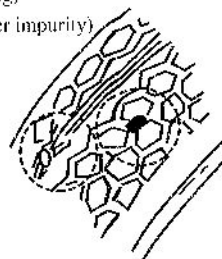


(pressure of tire)

- Check and clean out metal and crush pieces in the tire trough.
- Please change into new tire, if the crush or the depth of trough reach the limit.

(Please reference the drawing)

(Metal, crush piece and other impurity)



(Indication of meshing limit)



■ CHECK THE SPLINE COLLAR OF REAR TIRE AND FRONT & REAR HANGER SET

- When check the spline, support the vehicle by the center stand. Push the side of rear tire and look if the rear collar and the ring of rear fork loosen.
- Check carefully whether the location set of rear hanger system is stability.

■ CHECK AIR CLEANER

- The air cleaner is made in paper, and check and clean it every 2000km. After clean it, add equality a little oil.
- Change into termly new air cleaner every 5000km.

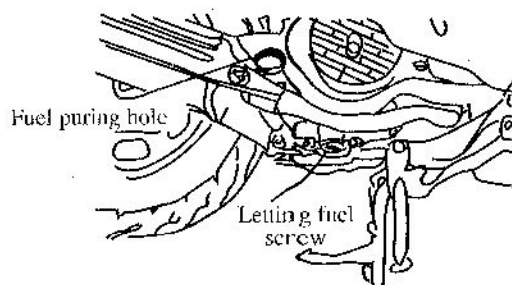
Way of changing reference the page 38.

NOTICE:

- Please replace and clean it under ways.
- Drive it in the wet days.
- Drive it in the dust roadway.

■ CHANGE OIL

Replace the oil firstly 300km, after every 1000km. Check the oil capacity every 500km and supply the oil in time until the limit. The capacity of oil: 0.9L, and the oil capacity of normal changing: 0.75L.



NOTE: Please replace the oil ahead of time driving the crush, short distance and cold zone place. When get down the screw of letting oil, clean the filter and fit it.

■ CHECK SPARK PLUG

The untidily of spark plug electrode and exceed windage effect on it's work.

〈Way of cleaning〉

The best way is using cleaner of spark plug to clean.
If have not cleaner, please use the needle brush.

〈ADJUSTING〉

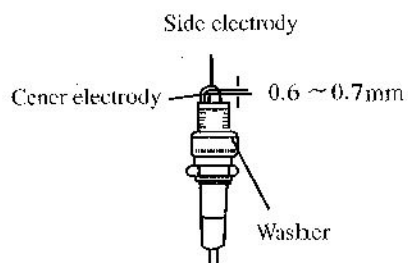
- Windage of side pole : 0.6-0.7 mm
(Reference drawing)

〈Appointed spark plug 〉

G7HSA(NGK)

U22FS-U(ND)

NOTE: Don't use the spark plug which isn't appointed.



NOTICE:

- Notice not to scald body because of high temperature of engine after stopping it.
- Twist into the spark plug with hands and wrench.

■ CHECK THE ELECTROLYTE OF BATTERY

[1] The vehicle adopt no-supplying water or supplying electrolyte battery.

Don't need to check and supply the no-supplying water battery.

NOTICE:

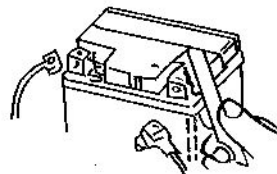
- Don't get down the seal electrolyte battery.
- When don't use the vehicle, please get down the battery and put up the cold and good air place, because it automatic discharge and reduce the power.
- Don't use the vehicle long time, please get down the cathode.

The line of liquid keep the level between the upper and the under limit, when use the supplying electrolyte battery. And supply proper the distilled water sometimes and keep up the good air condition.

[2] BATTERY HEAD

Firstly get down the three screws and battery cover when cleaning the battery head.

- Get down and clean the battery when the battery head is rotten.
- After cleaning it, please wipe a group of butter or Vaseline and fit it.



NOTICE:

- When getting down, shut off the electric source and get down the cathode. When fitting on, firstly fit on the positive pole.
- Lock the screw of battery head when it loosens.

■ Way of cleaning the air cleaner

Dust is the one of the cause of reducing the horsepower.

<Way of getting down>

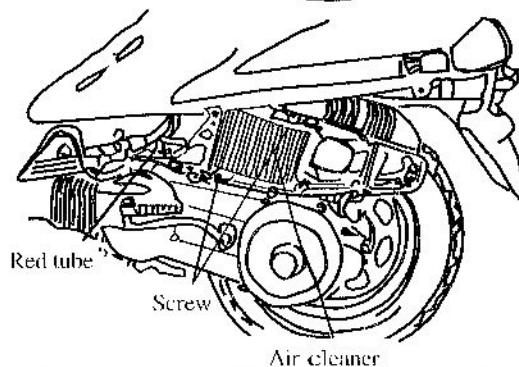
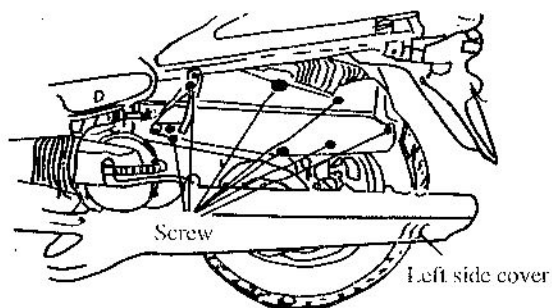
1. Get down the five locked screws in the left rear cover and rear cover, and then get down the seven locked screws.
2. Get down the cover & air cleaner.
3. Get down the two located screw of air cleaner.
4. Replace the seal of air cleaner.

<Way of fixing>

- Operate it according to above contrary ways.

NOTICE:

- If the air cleaner is not complete fit, the dust will enter into cylinder and make the horsepower down and usage of engine.
- Don't soaked air cleaner when cleaning the vehicle, if else make the engine ill.



NOTE: Please let out the oil in red tube every driving 1000km.

7. THE SPECIFICATION SCHEDULE:

Over size :length × width × high	2070 × 735 × 1410	The min consume L/100KM	≤ 2.9
Wheel base: mm	1450	Braking distance m	≤ 7(30km/h)
Dead mass kg	130	Climb performance (°)	≥ 10
Capacity of fuel tank kg	140	Engine model	YY1P57QMJ
Oil capacity of crankcase L	12	Style	Single cylinder, forced air, four stroke.
Trademark of fuel L	0.9	Stroke × bore	57.4 × 57.8
燃油牌号	RQ-90	Capacity cm ³	149.50
Trademark of lubricant	Four stoke especial oil SAE10W-30(SIGMA)	Compression ratio	9.2 : 1
The max speed km/h	≥ 85	The max power kW/r/min	7.0(7500)
		The max torque Nm/r/min	8.5(4000)

8.ELECTRIC PRINCIPAL DRAWING

