

If you believe that your vehicle has a defect which could cause a crash or could cause injury or death, you should immediately inform the National Highway Traffic Safety Administration (NHTSA) in addition to notifying (Zhejiang Huawin Motorcycle Industry Co., Ltd./China). If NHTSA receives similar complaints, it may open an investigation, and if it finds that a safety defect exists in a group of vehicles, it may order a recall and remedy campaign. However, NHTSA cannot become involved in individual problems between you, your dealer, or (Zhejiang Huawin Motorcycle Industry Co., Ltd./China). To contact NHTSA, you may either call the Auto Safety Hotline toll-free at 1-800-424-9393 (or 366-0123 in Washington, DC area) or write to: NHTSA, U.S. Department of Transportation, Washington, DC 20590. You can also obtain other information about motor vehicle safety from the Hotline.



Model WFH50-SE Gas Scooter Touring Scooter

Owner's Manual



Table of Contents

Specification/ Caution.....2

Engine Break in Procedure.....3

Description.....3

Control Functions.....3

Ignition Positions.....4

Battery.....4

Electrical Start.....5

Left and Right Handlebar Switches.....5

Brake Levers.....5

Pre Ride Check.....6-7

Fuel.....6

Throttle.....6

Checking the Engine Oil.....6

Steering Inspection.....6

Final Drive Oil.....6

Lights, Signals, Switches and Handlebars.....7

Checking Tire and Tire Pressure.....7

Brakes.....7

Brake Fluid Level.....7

Check Before Riding.....8

Starting Off, Riding, Stopping and Parking.....8

General Maintenance.....9-10

Engine Oil Replacement.....9

Changing The Engine Oil.....9

Final Drive Oil Replacement.....9

Spark Plug.....9

Cleaning of Air Cleaner.....9

Check and Adjustment of Valve Clearance.....10

Storage Procedures.....10

Maintenance.....10

General Safety Precautions.....11

Schedule Maintenance Chart.....11

Capacities.....11

Warranty.....13-15

! Warranty valid only when purchased from an authorized Wildfire dealer !
 Bike is sold as is except for a 2 year or 24,000 mile warranty (which ever comes first) on the engine and transmission. Wildfire products are sold as is without warranty, except for a 90 day replacement parts only warranty against manufacture defects. The warranty does not cover labor, misuse, abuse or damage in shipping. Assembly, labor, disassembly and reassembly are not the responsibility of Wildfire Motors; also there are **no refunds or exchanges**. Within 90 days of purchase, Wildfire Motors will replace any part that is a manufacture defect at no charge plus a \$10.00 shipping and handling fee after the consumer sends back the defective warranted part to Wildfire Motors. When warranty is confirmed, Wildfire Motors will ship all parts via DHL ground only. For replacement parts, please call Wildfire Motors toll free at 866-658-7300 or email parts@wildfiremotors.com. After 90 days from the date of purchase, replacement parts may be purchased from Wildfire Motors plus a \$10.00 shipping and handling fee.

NOTE: If there is any shipping damage to your bike, you must report this to the truck line immediately call us at 866-685-7300 ext. 107.

Registration must be completed and sent in within seven (7) days of purchase with a copy of your receipt to validate the warranty. No refunds or exchanges.

NOTE: Absolutely no warranty for consumable and normal wear items such as spark plugs, oil filters, fuel system cleaning, engine tune-up, lubrication, light bulbs, clutches, lubricants, air filters, belts, hoses, brake shoes, tires/tubes, plastic, battery, fuses, cosmetic problems or problems occurring due to lack of proper assembly or maintenance, or consumer abuse. Any and all modifications to the vehicle will void the manufactures warranty. Defective parts are subject to be recalled by WILDFIRE MOTORS.

Disclaimer:

Wildfire Motors disclaims the warranty of merchantability and fitness for any particular use. This disclaimer shall be effective as to all claims of any kind made by or through any wholesaler, retailer, consumer or any other persons or entity. Some states do not permit this disclaimer of implied warranties. Hence, this disclaimer may not apply to you.

Limitation of Remedies:

Consumer's remedy is limited to replacement parts only and in no event shall exceed the purchase price. Absolutely no returns or exchanges. Incidental, consequential and/or indirect damages are expressly disclaimed. NO person or entity is authorized to alter, amend or increase this limited warranty.

Warranty Validation:

Please fill out this form and mail it in to Wildfire Motors 11 Technology Way, Steubenville, Ohio 43952.

Name _____

Address _____ City _____ State _____ Zip _____

Dealer Name _____ Model # _____ Date of Purchase _____

Address _____ City _____ State _____ Zip _____

VIN # _____

WILDFIRE MOTORS
LIMITED WARRANTY
FEDERAL EMISSION CONTROL SYSTEMS

WILDFIRE MOTORS ("WILDFIRE") warrants each new motorcycle that includes as standard equipment a headlight, taillight and stoplight:
(a) is designed, built and equipped so as to conform at the time of initial retail purchase with all applicable regulations of the United States Environmental Protection Agency ("US EPA"); and:
(b) is free from defects in material and workmanship which would cause such motorcycle to fail to conform with applicable regulations of the US EPA, for a period of five (5) years and, depending on engine displacement: 0-169cc: 12,000km (7,456 miles)

This warranty time and mileage period shall begin on the date the motorcycle is delivered to the initial retail purchaser, or on the date the motorcycle is first placed in service as a demonstrator, rental, lease, or company motorcycle prior to retail sale.

- 1). **COVERAGE.** Warranty defects shall be remedied during customary business hours at any authorized WILDFIRE motorcycle dealer located within the United States in compliance with the Clean Air Act and applicable regulations of the US EPA. Any part or parts replaced under this warranty shall become the property of WILDFIRE.
- 2). **OWNERS OBLIGATIONS.** The following obligations must be fulfilled by the owner to maintain the validity of the WILDFIRE Emission Control Systems Warranty:
(a) Owner must deliver the motorcycle to an authorized WILDFIRE motorcycle dealer or equally qualified service facility for inspection, maintenance services and adjustments according to the Periodic Maintenance chart provided as part of or supplement to the owners guide. Optionally, the Owner may perform this maintenance only if it is within the scope of the Owner's technical and practical ability, keeping in mind some maintenance operations may require special tools or technical expertise beyond the scope of the average Owner. In any event, the inspection, maintenance and adjustments are to be performed at the owner's expense.
(b) Owner must present a copy of the proof of initial retail purchase date, issued at the time of purchase to an authorized WILDFIRE motorcycle dealer at the time warranty repairs are performed on the motorcycle. You may also be required to show that you have performed the required maintenance which is related to the alleged defect, so you should have detailed receipts indicating that the required periodic maintenance has been performed in accordance with the Periodic Maintenance chart in your owner's guide.
- 3). **LIMITATIONS.** This Emission Control Systems Warranty shall not cover any of the following:
(a) Repair or replacement required as a result of (i) accident, (ii) misuse or neglect, (iii) lack of reasonable and proper maintenance, (iv) repairs improperly performed or replacements improperly installed, (v) use of replacement parts or accessories not conforming to WILDFIRE specifications which adversely affect performance and/or durability, (vi) alterations or modifications not recommended or approved in writing by WILDFIRE, and/or (vii) use in competitive racing or related events.
(b) Replacement of parts and other services and adjustments required for routine maintenance.
(c) Any motorcycle on which odometer mileage has been changed so that the actual mileage cannot be determined.

4). **LIMITED LIABILITY.**
(a) The liability of WILDFIRE under this Emission Control Systems Warranty is limited solely to the remedying of defects in materials or workmanship by any authorized WILDFIRE motorcycle dealer at its place of business during customary business hours. Please refer to WILDFIRE website: www.wildfiremotors.com. This warranty does not cover inconvenience or loss of use of the motorcycle, or transportation of the motorcycle to or from the WILDFIRE dealer. WILDFIRE SHALL NOT BE LIABLE FOR ANY OTHER EXPENSE, LOSS OR DAMAGE, WHETHER DIRECT, INCIDENTAL, CONSEQUENTIAL OR EXEMPLARY ARISING IN CONNECTION WITH THE SALE OR USE OF OR INABILITY TO USE THE WILDFIRE MOTORCYCLE FOR ANY PURPOSE. SOME STATES DO NOT ALLOW THE EXCLUSION OR LIMITATION OF ANY INCIDENTAL OR CONSEQUENTIAL DAMAGES, SO THE ABOVE LIMITATION OR EXCLUSION MAY NOT APPLY TO YOU.

WILDFIRE MOTORS
LIMITED WARRANTY
NOISE CONTROL SYSTEM WARRANTY

The following warranty applies to the noise control system and is in addition to the Vehicle Warranty and the Federal Emissions Control System Warranty.
WILDFIRE warrants to the first, and each subsequent Owner, that this vehicle is designed and built so as to conform at the time of manufacture and sale with applicable Noise regulations of the US EPA (as tested under F-76 Drive-By FTP), and that it is free from defects in materials and workmanship which could cause this vehicle not to meet US EPA standards within one (1) year or 6,000 kilometers (3,730 miles), whichever occurs first.
The warranty period shall begin on the date the motorcycle is delivered to the first retail purchaser or, if the motorcycle is placed in service as a demonstrator or company vehicle prior to sale at retail, on the date it is first placed in service.

THE FOLLOWING ITEMS ARE NOT COVERED BY THE NOISE CONTROL WARRANTY

1. Failures which arise as a result of misuse, alterations, or accident.
2. Replacing, removing or modifying any portion of the Noise Control System (consisting of the complete exhaust and intake system, including air filter assembly) with parts not certified to be Noise-Legal for street use.
3. Loss of time, inconvenience, loss of motorcycle use or other consequential damage or loss.
4. Any motorcycle on which the odometer mileage has been changed so that the actual mileage cannot be determined.

CAUTION - CAUTION - CAUTION - CAUTION - CAUTION - CAUTION
Riders must comply with all local age rules and all local laws and regulations. Minors should never operate this product. **DO NOT** operate this product under the influence of alcohol, drugs or while receiving medical treatment. **DO NOT** ride this product without protective equipment, such as helmets, gloves, etc.. and any other protection that local regulations or laws require. Read the instructions carefully until you understand how to safely start, stop, turn, and yield to all obstacles in the environment.

Specification

- 50cc High Power 4-Stroke Engine
- Electric and Kick Start
- CVT (Constant Velocity Transmission)
- CDI Ignition
- 1 Gallon Gas Tank
- Large Built-in Dual Headlights
- High Quality Front and Rear Drum Brakes
- Heavy Duty 3.5-10 Tires
- Steel Frame with Heavy Coated Finish
- Large Comfortable Seat
- (Optional) Cellphone Ring Indicator.

CAUTION

- **Each time before you ride, make sure the brakes work properly and adjust if necessary .**
- **Check bolts for tightness weekly.**
- **PLEASE CHARGE THE BATTERY AS SOON AS YOU OPEN THE CARTON AND BEFORE YOU START THE ENGINE. CHARGE WITH A 2 AMP TRICKLE CHARGER FOR 6-7 HOURS.**
- **Your scooter may be equipped with an optional cellphone ring indicator in the gauge cluster. This feature indicates when your cellphone is ringing.**

Please have the last 7 digits of your VIN# ready when you call for parts.

Have a problem - Need parts - Please call Toll Free (866) 658-7300 • Email: parts@wildfiremotors.com

Engine Break-In

- Change it to 5W50, 10W50 or 15W50 synthetic oil. This is the most important time for the engine and the life of your scooter, because your engine is brand new, you should not carry excessive loads or ride at a high speed for a prolonged period of time. Vary your speed, do not operate at a continuous speed. Check the oil before starting. Run your bike under 30 mph for 1 hour and then change the oil.



Wildfire WFH50-S2E Maintenance Table

The X indicates at how many miles you need to check the Item. Replace the engine oil after the first 50 miles or 1 hour with 5w50, 10w50 or 15W50 synthetic engine oil. Then replace again every 1,500 miles or 1 each year. Check oil level every 500 miles, add oil if needed.

ITEM	500	1000	2000	2500	3500	4000	4500	5000	6000	6500	Check Daily
Engine Oil and Filter	X			X	X			X		X	X
Gear Oil	X		X			X			X		
Valve Clearance		X					X				
Cam Chain		X					X				
Carburetor		X					X				
Air Cleaner	Clean Every 1500 miles, Replace Every 3500 miles										
Fuel Filter	Clean Every 1000 miles, Replace if Necessary										
Brake System	X	X		X		X		X		X	X
CVT Belt				X			X			X	
Screws and Nuts	X			X				X	X		X

*When riding in a dusty environment, check and clean the air filter element more often.

Capacities

Fuel Capacity: 1.75 gallon

Final drive oil capacity: 3.5 ounces

Tire air pressure: Front 28 psi and rear 32 psi.

Control Functions

Speedometer

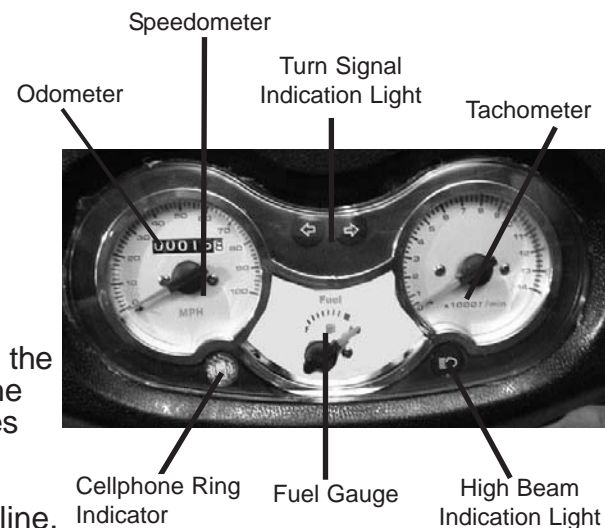
- Speed is measured in mph.

Odometer

- The total riding distance is indicated.

Fuel gauge

- The gauge indicates how much fuel is in the tank (the gauge does not work when the ignition switch is off). The needle moves from full "F" to empty "E" as your fuel decreases. Fill the tank with a good grade of 89-90 octane unleaded gasoline.



High Beam Indicator Light

- The high beam light indicates when the high beam headlight is in use. We strongly recommend you use your high beams in the day time.

NOTE: Apply the low beam to avoid obstructing the view of other drivers.

Turn Signal Indication Light

- The turn signals indicate that you are turning a chosen direction, push the button in the desired turning direction, it will return to the center, however you must push in to cancel.

General Safety Precaution

- Scooters can be hazardous to operate. Please operate it with the following safety instruction. If you fail to take proper precautions, a collision or fall may quickly occur. If you have any questions as to the operating condition of your scooter, turn off the engine and walk your scooter. These scooters should be ridden by persons with good vision, balance, coordination, reflex, strength and decision making capability.
- Please read this manual and all safety labels carefully, and follow correct operating procedures.
- Before you ride make sure that the brakes and throttle work properly.
- Never operate your scooter without wearing proper safety equipment that includes helmet, shoes, etc...
- Never operate your scooter under influence of alcohol or drugs.
- Always ride with both hands on the handle bars.
- Never operate at excessive speeds. Proper speed is determined by terrain, visibility, operating condition and experience.
- Never attempt wheelies, jumps or other stunts.
- Always inspect your scooter prior to each use to make sure all bolts are tight, and is in safe operating condition.
- Follow inspection and maintenance procedures and schedules described in this manual.
- Do not turn at excessive speeds.
- Maintain proper tire pressure: front 28 psi and rear 32 psi.
- Fuel is highly flammable. Keep it away from ignition sources or fire, especially when refueling, and always make sure engine is cool and not running when refueling.
- Engine and muffler get hot while in use, do not touch.

Main Switches

On Position:

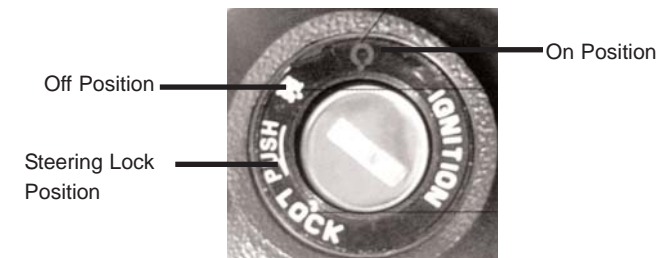
- Electrical circuits are switched on. The engine can be started and the key can not be removed.
- Do not leave the main switch in the on position for an extended period of time if the engine is not running

Off Position:

- All electrical circuits are off and the engine is stopped. The key can be removed in this position.

Steering Lock Position:

- Turn the handlebars to the left as far as they will turn, turn the key to the lock position and remove. The handlebars are now locked in the full left position.



Battery

- This scooter uses a sealed lead acid battery, it is unnecessary to check or add liquid ever. However you must charge with a 2 Amp trickle charger for 6-7 hours before using and at least once a month when in storage.

NOTE: Never open the electrolyte of a sealed battery. Remove the battery from the scooter and store separately in a well ventilated area when the scooter is not in operation for long periods of time.

Left Handlebar Switches

Dimmer Switch

- When the headlight is in the on position you have two options on the switch:
1. high beam 2. low beam



Turn Signal

- Use the turn signals when turning, pulling over or changing lanes to indicate to the other motorist which direction you are going. Push the switch to the right to turn right or push it to the left to turn left. The switch will automatically return to the center but the light will not go out until you push in on the switch.

Horn Button

- Push to use button to sound the horn, then release.



Right Handlebar Switches

Light Switch

1. All lights are off. However if the engine is running the headlight is always on.
2. Taillight, license plate light and the dash lights are on.
3. Headlight, taillight, license plate light and the dash lights are on.



Electric Start Switch

- Turn the key on and you must leave the throttle in idle then push this button to start the bike.



NOTE:

- Make sure all accessory switches are in the off position.
- Apply the rear brake prior to starting the engine.
- Never exceed 4 seconds when using the starter switch.
- Release the starter switch immediately after the engine starts.
- Do not apply the starter switch while the engine is running.

Front and Rear Brake Levers

- The front brake lever is located on the right handlebar and the rear brake lever is located on the left. Use both brakes when stopping, if the front wheel skids let off immediately and reapply.

Kill Switch

- When you need to shut the engine off, press and hold the button until the engine has stopped.

Check and Adjustment of Valve Clearance

- Excessive valve clearance will cause noise and engine damage. Little or no clearance will prevent the valve from closing and will cause damage to the valve and the bike will have a loss of power. Check the valve clearance when the engine is cold.
- Remove the center hole cap from the case cover, generator cover and cylinder head cover.
- By using a T spanner or kick starter, rotate the generator flywheel counterclockwise until the T mark on the flywheel lines up with the index mark on the view hole. In this case, the piston may either be on the compression or exhaust stroke. The adjustment must be made when the piston is at the TDC (top dead center) of the compression stroke, and both the intake and exhaust valves are closed.
- This condition can be determined by moving the rocker arms. If they are free, it is an indication that the valves are closed and that the piston is on the compression stroke. If they are tight and the valves are open, rotate the flywheel by 360 degrees and realign the T mark to the index mark.
- Check the clearance of both valves by inserting a feeler gauge between the adjuster screw and the valve stem.
- The intake valve clearance should be .002 inches and exhaust valve clearance should be .0024 inches.
- If it is necessary to make an adjustment, loosen the lock nut and turn the adjusting screw so there is a slight resistance when the feeler gauge is inserted. After completing the adjustment, tighten the lock nut while holding the adjusting screw to prevent it from turning. Finally, recheck the clearance to make sure that the adjustment was not disturbed.
- Reinstall all of the parts to their original positions.

Storage Procedure

- During extended storage, store in a well ventilated area. Empty the fuel tank and start the engine to clear out the remaining fuel.

Maintenance

- Proper maintenance is important to prolong the life of the scooter and to avoid injuries to the operator. Check the stability of the handlebar and brake cables to ensure they are reliable and flexible before each operation. Brake cables may need adjusted after use. The front tires should be properly maintained at 28 PSI and the rear at 32 PSI. Under inflated or over inflated tires result in performance loss, tire wear or even tire damage. The scooter should always be kept in a clean condition and may require some cleaning after each use. Always use a clean soft cloth to wipe off any dirt or debris that you may encounter while riding. Any moisture or rain should be wiped off prior to storage. Avoid operating the scooter in rain or through water puddles. Excessive moisture to the electronics will damage them. Avoid storage of the scooter in moist areas, or near corrosive gases. Proper maintenance will help prolong the life of the scooter and make your riding experience more enjoyable. Never exceed the weight capacity of the scooter. Never carry a passenger. Proper care will result in many years of use.

Please have the last 7 digits of your VIN# ready when you call for parts.

General Maintenance

Spark Plug
NGK C7HSA
Gap .035

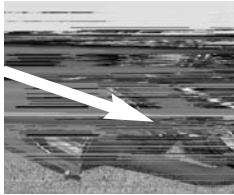


Engine Oil Replacement

- Replace the engine oil after the first 50 miles or 1 hour with 5w50, 10w50 or 15W50 synthetic engine oil. Then replace again every 1,500 miles or 1 each year. Check oil level every 500 miles, add oil if needed.

Changing the Engine Oil

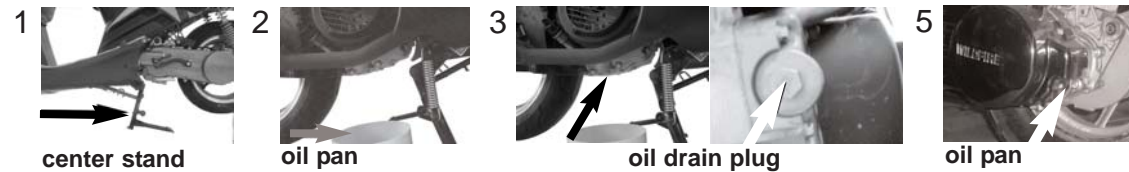
- (1). Warm up the engine for a few minutes.
- (2). Stop the engine.
- (3). Place scooter on center stand.
- (4). Place an oil pan under the engine and remove the dipstick.
- (5). Remove the drain plug and drain the oil. Reach in drain hole, pull out filter clean and reinstall, after all oil drains out.
- (6). Reinstall drain plug.
- (7). Fill the engine with oil until the level is in the designated area on the dipstick.



- (8). Start the engine and check for oil leaks. If a leak is found stop the engine immediately and look for cause.

Rear Wheel Oil Replacement

- Replace the gear oil after the first 500 miles with 5W/50 synthetic engine oil. Replace the gear oil again every 4 months or every 2000 miles.
- Replacing the Gear Oil
 - (1). Put the scooter on the center stand (please see photo below).
 - (2). Place an oil pan under the gear case (please see photo below).
 - (3). Remove the oil filler bolt and the drain plug to drain the oil (please see photo below).
 - (4). Reinstall and tighten the drain plug.
 - (5). Fill the gear case with oil (please see photo below).
 - (6). Reinstall the oil filler bolt.
 - (7). Check for oil leakage.



Cleaning Air Cleaner

Be sure to check the air cleaner regularly.

- (1). Place the scooter on the center stand.
- (2). Unscrew and remove the left side panel.
- (3). Remove the air cleaner cover by removing the screws.
- (4). Take out the air cleaner by removing the screws.
- (5). Remove the air cleaner element and wash it gently, but thoroughly in solvent. Replace if damaged.
- (6). Squeeze out the excess solvent and dry it.
- (7). Apply oil to the entire surface of the air cleaner and squeeze out the excess oil. It should be damp but not dripping.
- (8). Install the air cleaner, cleaner cover, and left side panel.

Pre Ride Check

Fuel

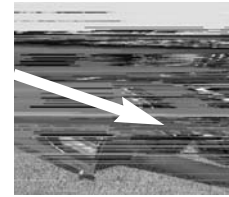
- Check before you ride. Do not over fill the tank. Fuel capacity: 1.75 gal.

Throttle

- Turn the throttle and make sure that it turns smoothly, freely and returns to idle when released.

Checking the Engine Oil

- Place the scooter on level ground on the center stand.
- If the oil level is below the designated area, add 5W50, 10W50 or 15W50 synthetic oil until the level is between the lower and upper marks on the dipstick. Do not overfill.



Dipstick

Note: Be sure the scooter is level when checking the oil. A slight tilt to the left or right can cause a false reading.

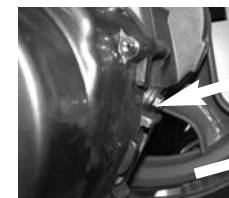
Steering Inspection

- Place the scooter on a stand so that the front wheel is off the ground. Hold the lower end of the front fork and try to move it forward and backward. If any free play can be felt consult a mechanic regarding the steering.

NOTE: Securely support the scooter so there is no danger of it falling over.

Final Drive Oil

- Recommended Oil: 5W50, 10W50 or 15W50 synthetic engine oil.



Fill Plug



Drain Plug

Please have the last 7 digits of your VIN# ready when you call for parts.

Have a problem - Need parts - Please call Toll Free (866) 658-7300 • Email: parts@wildfiremotors.com

Lights, Signals, Switches and Handlebars

- Check all lights, meters, indicator lights and electrical connections to make sure they are all in proper working condition.
- Check the handlebars make sure they turn both ways smoothly.

Tires

- Always check the tires before riding, be sure they are in good condition, check for nails, glass or any other items that may puncture your tire. Check for cracks in the side wall. If there are any problems replace immediately.

Tire Pressure

- To ensure maximum performance and safe operation please check the tire pressure before riding. Do not over or under inflate your scooters tires because the handling characteristics are very different with improper air.
- Front Tire Pressure: 28 psi (cold)
- Rear Tire Pressure: 34 psi (cold)

Brakes

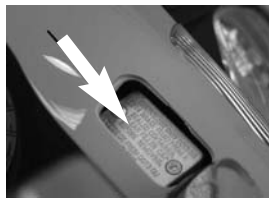
- Check the brakes before you ride each time if they are soft or spongy or are not working right, repair immediately.
- Apply the brakes and make sure that the fluid is not leaking out of the brake lines the master or wheel cylinder.

Brake Fluid Level

- Check your front brake fluid level, add if necessary.
 1. When checking the fluid level make sure the top of the brake master cylinder is level by centering the handlebars.
 2. Refill with DOT 3 brake fluid. Mixing fluid may result in a harmful chemical reaction and lead to poor brake performance.
 3. Be careful that water does not enter the master cylinder when refilling.**NOTE:** Brake fluid may destroy painted surfaces or plastic parts, be sure to clean up all spills.



cap for brake master cylinder



brake master cylinder

Check before Riding

- Make sure the brakes and throttle work properly and adjust if necessary.
- Check bolts for tightness.
- Make sure there is plenty of fuel.
- Check tire pressure.
- Check all of the lights, headlight, taillight, turn signal etc.
- Check the engine oil.

Starting Off, Riding, Stopping and Parking

(1). Before starting, put the side stand up.

(2). Turn the key to the on position.

(3). Apply the rear brake.

(4). With the throttle at idle position push the electric start button never exceed 4 seconds when using the starter switch. or use the kick start. Be sure and replace the kick starter to its original position before riding.

(5). If the bike is on the center stand hold the handle bars with both hands put your foot on and push forward, if the bike is on the kick stand hold the bike up and push the kick stand up with your foot.

(6). For a cold engine, let the engine idle for 1-3 minutes before riding.

(7). Sit on the bike keeping one foot on the ground for stability, release the brake and twist the throttle to accelerate, after you start to accelerate put both feet on the foot rest only putting them on the ground when coming to a stop.

(8). When coming to a stop decrease your speed by releasing the throttle and apply both of the brakes, if the front tire begins to skid release and reapply.

(9). Parking: Turn the handlebars to the left as far as they will turn, then turn the key to the lock position (this will lock the steering, remove the key, to avoid theft.) Put your kick stand down or use the center stand. **NOTE:** The muffler and exhaust pipe are hot. Park away from pedestrians.

(10). Practice in an empty parking lot or driveway until you feel confident enough to ride on the street.

(11). When preparing to ride on a street make sure the headlights are on bright, check for traffic and use your turn signals at all times remember to turn the signals off after use.

(12). Always remember to obey your local and state laws and regulations.

(132). When driving always be aware of car doors opening in front of you.

Please have the last 7 digits of your VIN# ready when you call for parts.